

***We Align With Christ For Life***  
**By Keith Yoder**  
**Founder & Minister, Teaching The Word Ministries**

**SVPS Fall Banquets**  
**October 18 & 19, 2018**



## **Alignment**

Place settings at our table

- Wheels on our automobiles
- Braces for our child's teeth
- Positioning two or more things together according to a standard such that they are parallel, in accord, or mirror the standard
- In brief, means "together with"

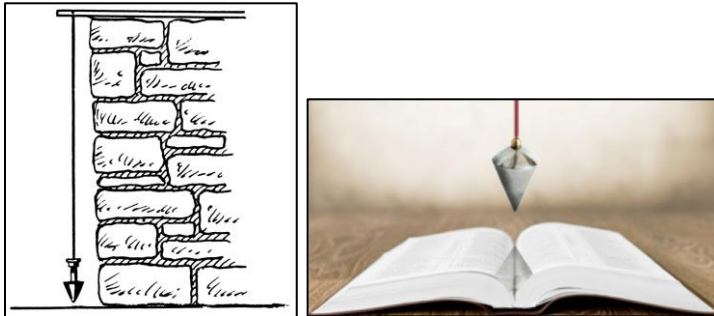
## **Cornerstone**



- Sets the standard for the construction of the building
  - Vertically--Love God                      Mt 22:37-38
    - "And he said to him, 'you shall love the Lord your God with all your heart, and with all your soul, and with all your mind. This is the first and foremost commandment.'"
  - Horizontally—Love neighbors      Mt 22:39

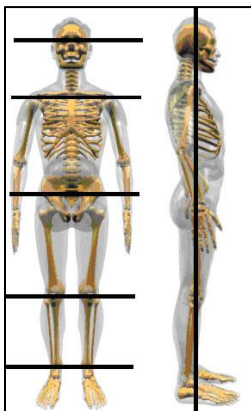
- “The second is like it, ‘You shall love your neighbor as yourself.’
- Jesus is the chief cornerstone Eph 2:20
  - “Having been built upon the foundation of the apostles and prophets, Christ Jesus Himself being the corner stone.”
  - Illumines us to see the light of truth
  - Gives a holy perspective to address things in the darkness
- **We align with Christ in love . . . for life**

## Plumb Line



- Guide and standard for building
- Standard for correction Amos 7:7-8a
  - “Thus He showed me, and behold, the Lord was standing by a vertical wall with a plumb line in His hand The Lord said to me, ‘What do you see, Amos?’ and I said, ‘A plumb line in the midst of My people Israel. . .’”
- An image of the Word of God, the Scriptures
- A prophetic call to sacredness
- A call to honor all life as God sees it, as sacred
- **We align with Christ in sacredness . . . for life**

## Head



- The head coordinates the activity of the body
- The skeletal frame aligned with the head is flexible
- Alignment of the body with the head promotes health and productivity
- Christ is head over all things to the Church      Ephesians 1:22
  - “And He put all things in subjection under His feet, and gave Him as head over all things to the church”
- **We align with Christ for wholeness . . . sacredness . . . for life**

## With

- The Word was with God      John 1:1-2
  - “In the beginning was the Word, and the Word was with God, and the Word was God. He was in the beginning with God.”
- Face to face, present, toward, together with
- Com = with in compassion
- Sym = with in symphony
- Syn = with in synergy (the effect is greater than the sum of the parts)
- Joining together in relationship, in community, for a common cause
- **We align with Christ in presence . . . for life**

## We align with Christ for life!