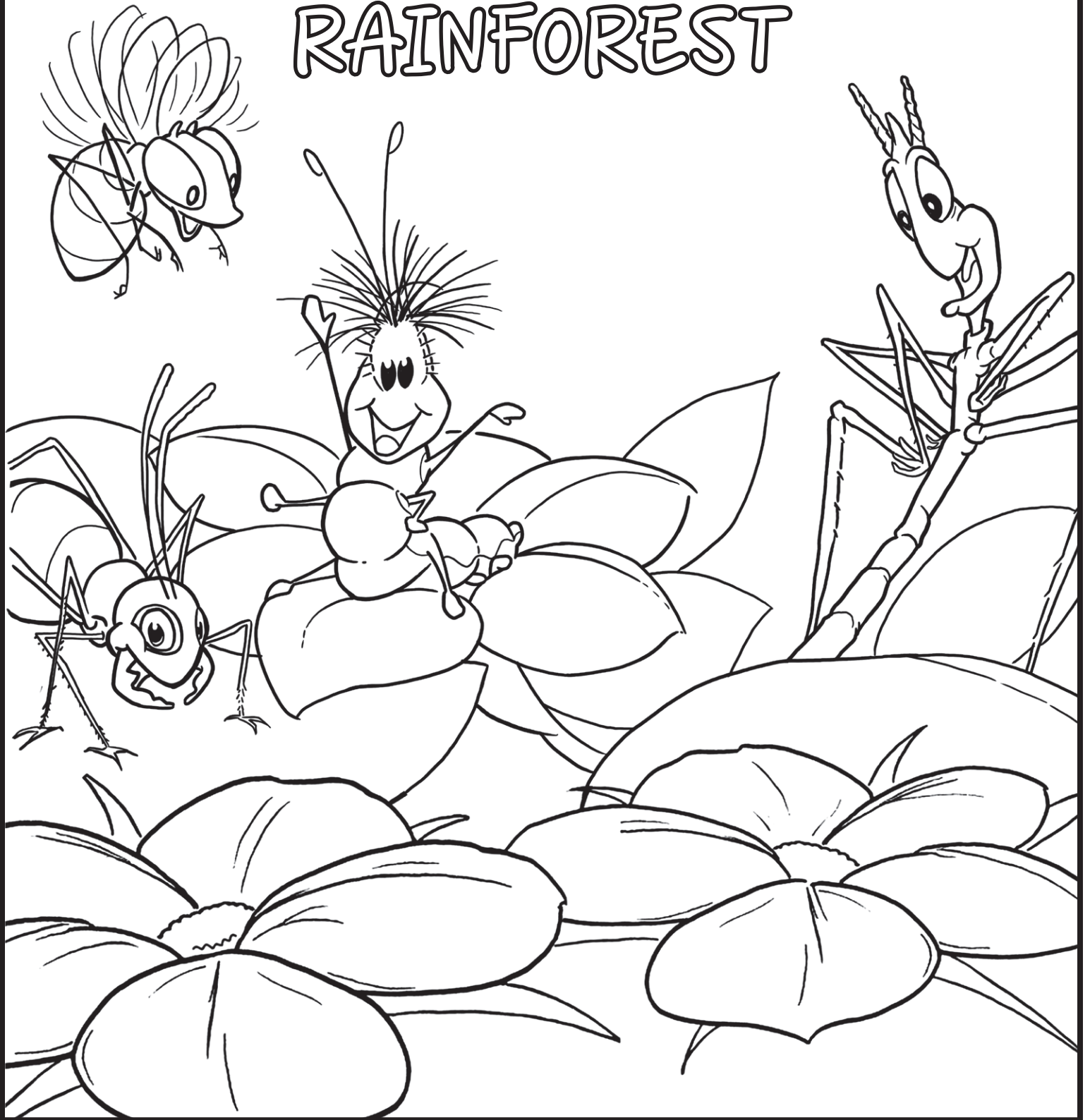
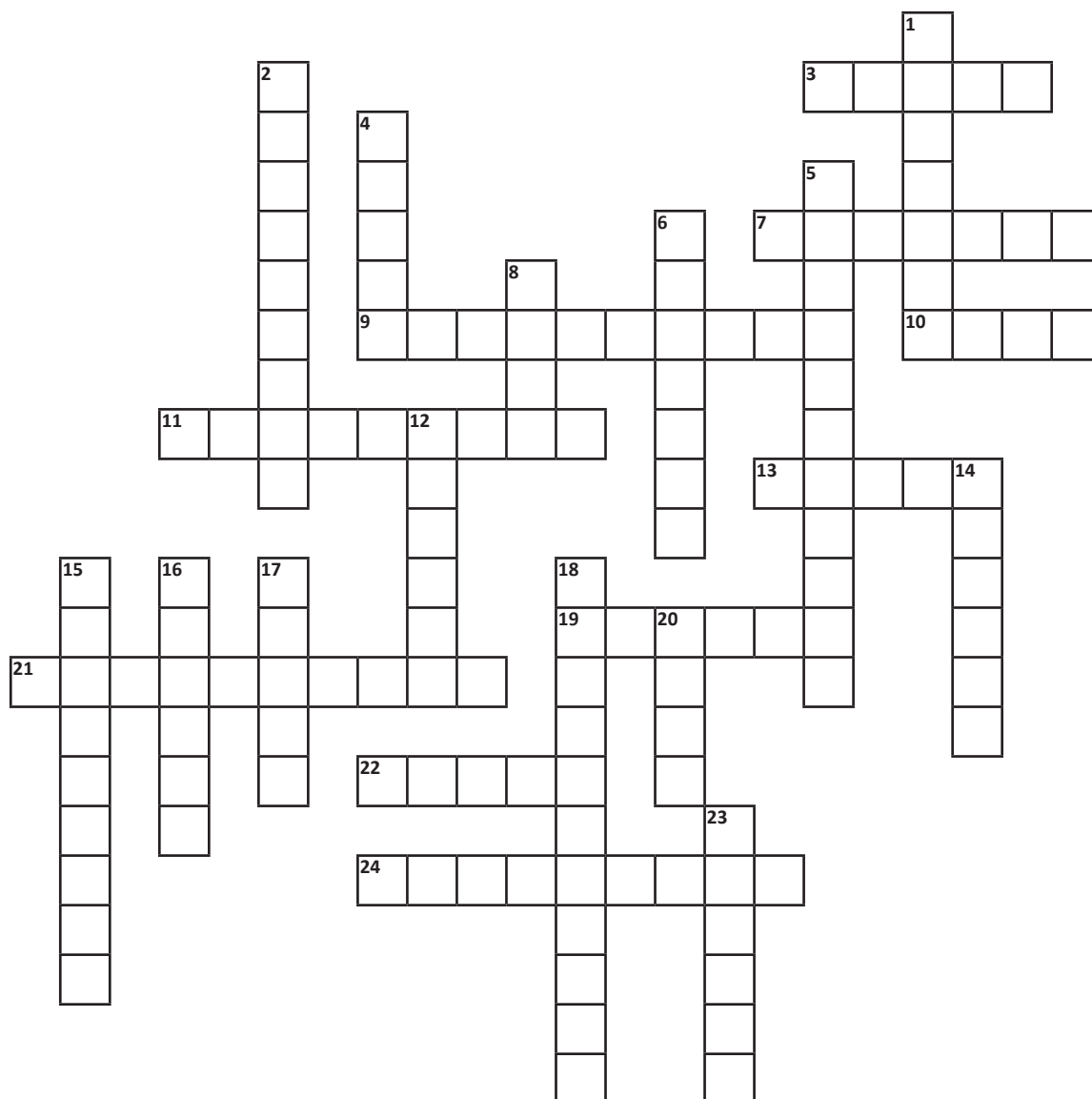


WELCOME TO THE RAINFOREST



"You are worthy, O Lord our God, to receive glory and honor and power. For you created all things, and they exist because you created what you pleased." - Revelation 4:11

JUNGLE FUN FACTS



DOWN:

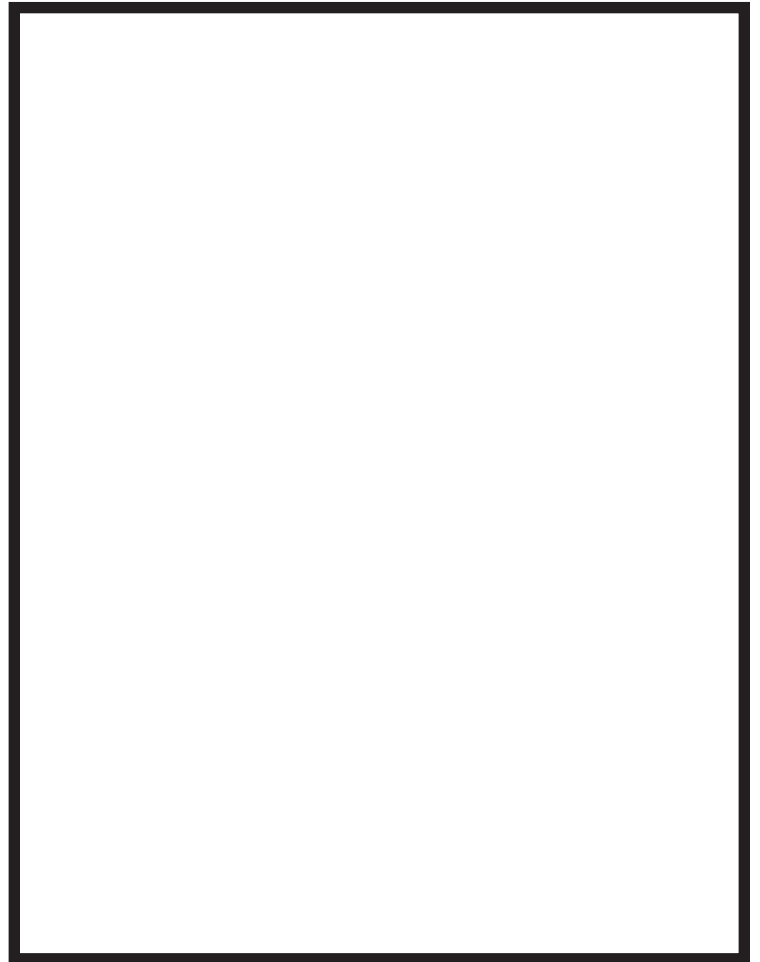
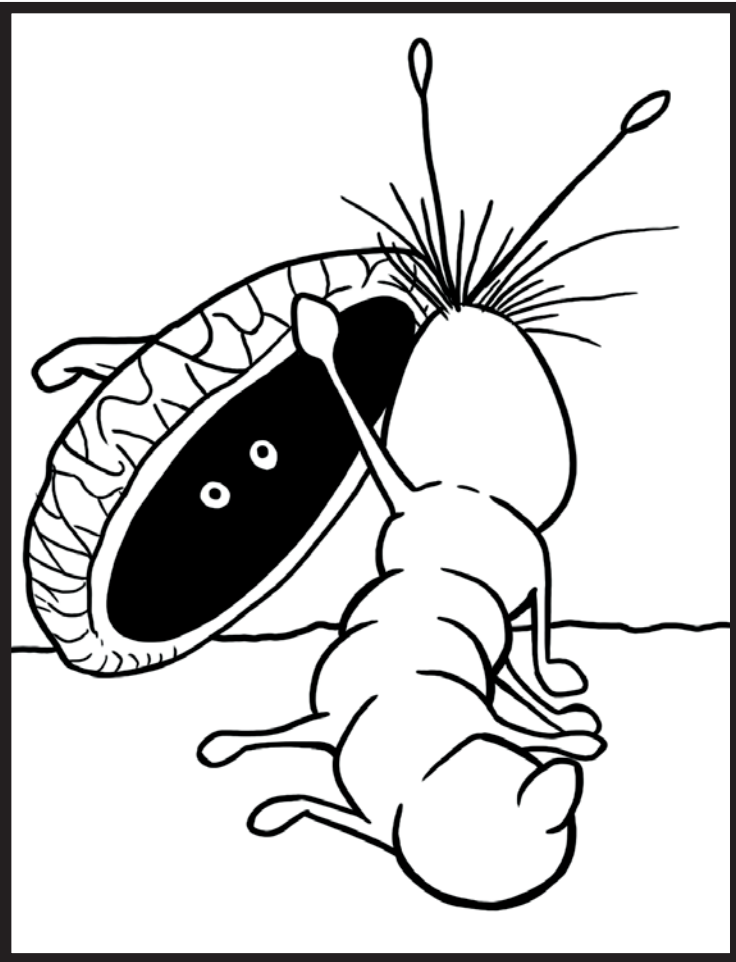
- 1. Nickname for leafcutter ants, “ ___ of the rainforest”
- 2. Kati’s future adult form
- 4. To copy a behavior
- 5. Where leafcutter ants grow their food
- 6. Ant nests can have several ___ workers
- 8. Small flowerless plants in the rainforest
- 12. The caterpillar diet
- 14. Tropical bird with a large, hollow beak
- 15. Tropical reptile that can change colors
- 16. What leafcutters actually eat
- 17. Slow-moving mammal in the rainforest
- 18. Kati’s current life stage
- 20. Army, bullet, and fire, are kinds of ___
- 23. Tree layer made of leaves and branches

ACROSS:

- 3. Anaconda, the largest ___ in the rainforest
- 7. Kati, Nick, Anthony, and Flora are kinds of ___
- 9. Means of blending in to the environment
- 10. Used by poison dart frogs to deliver toxins
- 11. The top surface scales of a blue morpho’s wings are actually ___
- 13. Adult blue morph’s preferred diet, rotten ___
- 19. Largest rainforest
- 21. Tropical woodland that receives at least 100 inches of rainfall per year
- 22. Poison dart frogs use this to warn potential predators to stay away
- 24. The class of animals to which Kokee, the tree frog, belongs
- 23. Tree layer made of leaves and branches

MYSTERY CREATURE

With her parents' permission, Kati spent her first day exploring the rainforest. At one point, she looked under an acorn cap. She got a glimpse of a creature that was hiding there, but it scurried away before she could find out what it was.



DIRECTIONS: Use your imagination and decide what you think the creature under the acorn cap was. Draw and color the creature in the empty box next to Kati. It can be real or imaginary. Be creative!